



Registered with  
**FUNDRAISING  
REGULATOR**



Registered Charity No. 801382

**WINTER 2020**

# FUNDRAISING NEWS

**KMSTC FUNDRAISING NEWSLETTER**



Photo credit: Encade

A special thank you goes out to all those businesses who supported the event with sponsorship or a raffle donation. Our kind supporters in 2020 were:

- Barchester Health Care (Herne Bay Care Home)
- PSR Legal
- Encade Photos
- Brogdale collections
- Chapter One restaurant
- Choose Leisure
- Quinn Estates
- Pococks
- o-a-sys
- Jenner
- Purple Edge
- Hush Heath Estate

We are delighted to announce that our rescheduled Golf Day will now take place at Broome Park Golf Course on Friday 19 March 2021.

For more details, including sponsorship opportunities, please contact [fundraising@kentmstc.org](mailto:fundraising@kentmstc.org)

## RAINED OFF GOLF DAY STILL RAISES OVER £6,000 FOR KMSTC

On Friday 2 October KMSTC was all set to hold its only live event of 2020, our Golf Day at Broome Park Golf Course near Canterbury.

Unfortunately the poor weather in the lead up to the event and on the day, meant the event had to be postponed, even though our 18 teams of golfers were raring to go on the morning.

All was not lost however, as the golfers were still able to buy raffle tickets and mulligans as well as bid on an online auction of four-ball donations.



Photo credit: Encade



## WELFARE PACKS WARMLY RECEIVED BY MS COMMUNITY IN KENT

More than 20 volunteers from the Kent MS Therapy Centre, Air Ambulance Kent Surrey Sussex (KSS) and Pfizer assembled and distributed over 600 welfare packs across Kent, Medway and East Sussex between May to July.

The packs, containing food essentials such as pasta, tea, coffee, baked beans, porridge and jam, were delivered to people with Multiple Sclerosis (MS) who are members of KMSTC. The packs were funded by a number of grant giving organisations which set up emergency funds specifically to help charities affected by the Covid-19 crisis.

Since the packs were delivered, many messages of thanks have been received by members who were thrilled with their gifts.

Gilly Stowe, from Herne Bay, said: "What a lovely gesture. You know already that I think you are wonderful, amazing. This only endorses it further, bless you all."

Jo Robson, from Whitstable, added: "Thank you so much for the lovely parcel. Amazing place that has helped me so much."

Sean Pryor, from Whitfield, said: "I am very grateful at this kind thought and such a wonderful initiative. It was very surprising and put a smile on my face. You would have thought I had won the lottery! Just goes to show that simple kindness and gestures are very impactful."

Vehicles kindly made available to KSS by Jaguar Land Rover were used to transport the packs across the county.

In addition, Robins Packaging in Hersden donated paper bags for the initiative and Kite Packaging in Sittingbourne donated cardboard boxes.

Reckon you could brave an exhilarating wing walk in aid of the Kent MS Therapy Centre?

We currently have two slots (per day) available to book onto:

**Thursday 24 June 2021**

**Saturday 17 July 2021**

Or you can pick your own date!

Email [fundraising@kentmstc.org](mailto:fundraising@kentmstc.org) to find out more!





# GRANTS HAVE A BIG IMPACT IN 2020



In what has been the most extraordinary year and we would like to pay tribute to all the trusts and foundations who have given so generously to keep us going, supporting our core costs, specific therapies and projects.



In partnership with  
THE NATIONAL LOTTERY  
COMMUNITY FUND

We can't list you all, but we'd particularly like to mention the following trusts, who have given £5,000 or over in 2020:



Frank Brake Charitable Trust, Meads Trust, Colyer-Fergusson Charitable Trust, Kent Community Foundation, The John Swire 1989 Charitable Trust, The Thomas J Horne Memorial Trust, HM Government Coronavirus Community Support Fund (distributed by the National Lottery Community Fund), The Childwick Trust, William Brake Foundation, St. Saviour's Medical Charity, Cantiacorum Foundation and The Edward Gostling Foundation.



The William Brake  
Foundation

## DONATED INK CARTRIDGES BRING US £££'S!

Did you know we have a partnership with



Through this partnership everyone who has a printer (at home or at work) can help KMSTC raise funds simply by recycling their ink cartridges via the Recycle4Charity programme.

For each inkjet cartridge recycled via the programme we will receive a £1 donation, meaning you can help the environment whilst raising money for our charity!

To start, all you need to do is go to the link below and sign up for your free account.

<http://www.recycle4charity.co.uk/Register/C86702>

Since we joined the scheme we've raised £193.50 but we are sure a lot more could be raised. It won't cost you a penny as Recycle4Charity will send you a free recycling bag or box to return your cartridges to them.



## 25 APRIL 2021 - VITALITY BIG HALF MARATHON

The Vitality Big Half Marathon returns on Sunday 25 April 2021 and we'd love to see you there as part of #TeamKMSTC!

The route sees participants starting at Tower Bridge and taking in parts of the world famous London Marathon course before finishing at The Cutty Sark, Greenwich. In 2019, more than 13,000 runners of all ages, backgrounds and abilities took part in the community event including Sir Mo Farah!

If you'd like to run this route and raise money for KMSTC, please register your interest by emailing us at [fundraising@kentmstc.org](mailto:fundraising@kentmstc.org)

# #Run26forKMSTC



Our incredible team of staff ran 26 miles for KMSTC, and managed to raise £1,873 in the process!

Karen Middlemiss, Sarah Bosley, Ann-Marie Bundock, Jen Needham, Moira Mitchell, Alice Young, Lucy Cumberland, and Louise O'Boyle all took part in the marathon relay on the 31 October 2020, and completed the challenge in just over five hours.

A huge thank you to everyone that sponsored our staff team.

## LONDON MARATHON

We are currently seeking people with their own ballot places to take on the Virgin Money London Marathon in aid of KMSTC on Sunday 3 October 2021.

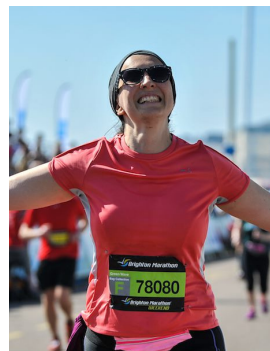
**We also have One Silver Bond Charity Place available – whoever secures this needs to raise a minimum of £2,000 for us and needs to complete an application form in the first instance.**



If you already have a Virgin Money London Marathon ballot place or are interested in our Silver Bond Charity Place, please contact us at [fundraising@kentmstc.org](mailto:fundraising@kentmstc.org) as we would love to hear from you!

## BRIGHTON MARATHON

The Brighton Marathon 2021 has been postponed to Sunday 12 September 2021. We are currently seeking four people to take on this challenge for KMSTC.



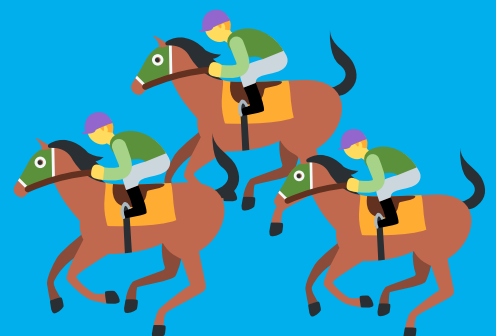
With roaring crowds and a fantastic atmosphere, the Brighton Marathon is one of Europe's favourite 26.2 milers. The course winds through the iconic city centre before finishing on the seafront.

If you are interested in running with #TeamKMSTC please contact [fundraising@kentmstc.org](mailto:fundraising@kentmstc.org)

We've been trying out all sorts of virtual events since Covid-19 meant we could not hold events out in the community. One of our most successful has been the virtual race night held in November which raised £1,073.

If you would like to see it return in 2021, do drop the fundraising team a line on [fundraising@kentmstc.org](mailto:fundraising@kentmstc.org) and we shall see what we can do! We would like to thank Direction Law for sponsoring one of the races too.

## VIRTUAL RACE NIGHT





# JAZZ AT HOME

You've seen it on Strictly and now it's your turn! Start the New Year off with a bang and join International Swing Dance teacher Charlotte Middlemiss for this four week, fun, absolute beginners course focussing on vintage dances from the Charleston to the Jive! Great exercise and great fun, all in the comfort of your own home.

The course commences on Wednesday 6 January 2021 and runs weekly until Wednesday 27 January. Entry to each class from 7pm. Each 45 minute session covers dances from the 1910's-1950's.

Charlotte travels all over the world teaching and performing all styles of swing and jazz from the 1910's-1950's. As well as several TV and music video debuts, performing at The Royal Albert Hall among other prestigious venues, she has also performed alongside Strictly's Anton and Erin as well as working with Len Goodman!

Tickets are available on either a four week booking basis at £35.00 or drop in rate of £10.00 per session. The event will take place using Zoom and Facebook Live (via a private Facebook group). Those booking the course will be added to a private Facebook group.

For more information please email [fundraising@kentmstc.org](mailto:fundraising@kentmstc.org)



## BRINGING IN THE ££££'S OVER CHRISTMAS!

A huge thank you to everyone that bought tickets in our Christmas raffle or placed bids in our online auction.

**A total of £3,249 has been raised for KMSTC.**

We are also extremely grateful to the many individuals and businesses that gifted items for both events. There are too many to list but a heartfelt thank you from us all.

## DELIVERING TALKS IN THE COMMUNITY

This year we have been unable to do any presentations at community groups because of the pandemic.

We hope in 2021 we can make some bookings so that we can spread the word about our charity. If any groups would like a member of the fundraising team to deliver a talk in person or online please get in touch on [fundraising@kentmstc.org](mailto:fundraising@kentmstc.org)

# Create a Tribute Fund

Remember and celebrate the life of a loved one by creating an online Tribute Fund and help our charity to continue offering a variety of key services to people living with MS. Connect with family and friends wherever they are in the world to remember that special person, sharing memories, stories, photos, music and videos, and honour their life.

**Create your personalised Tribute Fund here:** <https://www.muchloved.com/CreateMemorial>  
Alternatively, if you have any questions please email our fundraising office on [fundraising@kentmstc.org](mailto:fundraising@kentmstc.org) for support and guidance.

## Want to be Friends?

Friends are important to everyone and at the Kent MS Therapy Centre we really value our friends! We rely on our Friends to help us provide the best services for people living with Multiple Sclerosis (MS) across Kent and Medway. Our services are delivered at our centre in Canterbury and virtually through our online Click and Connect Programme.

Here's how you can join our Friends Scheme and ensure the future of the Kent MS Therapy Centre for many years to come:

- **Donate £5 monthly** and you will receive – our newsletter and a branded face mask
- **Donate £10 monthly** and you will receive – our newsletter, a branded face mask and one ticket to our 2021 Music Shack Festival or Glitter Run Event
- **Donate £20 monthly** and you will receive – our newsletter, a branded face mask and two tickets to our 2021 Music Shack Festival or Glitter Run Event
- **Donate £50 monthly** and you will receive – our newsletter, a branded face mask and one ticket to our 2021 Christmas Ball

**Join our Friends Scheme today:** <https://kentmstc.enthuse.com/friendsscheme>

**\*\*We would like to say a special thank you to former Trustee and member Richard Curzon who came up with this idea of a Friends Scheme. We are delighted that we can now roll this out and hope as many people as possible will support this.\*\***



## TANDEM SKYDIVE



Experience the thrill of a lifetime by taking part in a tandem skydive at Headcorn Airfield in aid of the Kent MS Therapy Centre! You'll need to commit to raising £450 in sponsorship for the Centre.

We have the following dates already booked in during 2021:  
**Friday 11 June 2021 | Saturday 3rd July 2021**

Please get in touch for more information or to book by emailing [fundraising@kentmstc.org](mailto:fundraising@kentmstc.org) or call 01227 470876.



# CHERRY'S WONDERFUL GIFT TO OUR CHARITY

By choosing to leave a gift to the Kent MS Therapy Centre in your Will, you will be making a big difference to people living with Multiple Sclerosis (MS) now and into the future.

Many people with varying financial circumstances choose to leave a gift in their Will to our charity.

One of these was former member Cherry Pay who left the Centre £10,000 in her Will. Cherry passed away earlier this year during the summer.



Cherry used to regularly attend the Centre to take part in the Friday singing group. In fact, it was due to Cherry that our singing coach Kim Lloyd started working at KMSTC. Cherry and her granddaughter also used to run the Christmas Tombola at the Christmas Market and she enjoyed having a range of therapies at the Centre.

We are incredibly grateful to Cherry for her most generous gift and to her family for ensuring her wishes were carried out.

## HERE'S TO OUR WONDERFUL CORPORATE SUPPORTERS

We have had some amazing support from Kent companies during this difficult year. Unfortunately we can't acknowledge them all in this publication but we would like to extend a special thank you to Pocock's Solicitors of Whitstable. They have supported us for many years through a regular monthly donation, in addition to sponsoring and attending many of our events. This year alone Pocock's have donated more than £6,000 to our charity and we are incredibly grateful to Andrew Lawrie for his continued support of KMSTC.



## THANK YOU

We would also like to thank the following organisations that donated £500 each to our charity this year:

We would also like to thank the following companies for making donations towards the running costs of our Centre:

John Lewis Ashford (£1,000)

Saga Shipping (£800)

Asda Folkestone (£500)

- Milton Regis Social Club
- Dover Lions Club
- Inner Wheel Club Of Ashford

During December we ran three virtual quizzes over Zoom hosted by member and volunteer Rob Moon.

We had a great turn-out with up to twenty teams taking part per event, raising a fantastic £547 for our charity.

We would like to thank Shepherd Neame Brewery, Jenner Construction and member Tanya Roots for donating hampers as prizes for each event.

## VIRTUAL QUIZZES

